

South Africa

Population 2018

58 million

Estimates of TB burden ^o , 2018	Number (thousands)	Rate (per 100 000 population)
Total TB incidence	301 (215–400)	520 (373–691)
HIV-positive TB incidence	177 (127–235)	306 (219–406)
MDR/RR-TB incidence ^{oo}	11 (7.2–16)	19 (12–28)
HIV-negative TB mortality	21 (20–23)	37 (35–39)
HIV-positive TB mortality	42 (30–57)	73 (51–99)

Estimated proportion of TB cases with MDR/RR-TB, 2018

New cases	3.4% (2.5–4.3)
Previously treated cases	7.1% (4.8–9.5)

TB case notifications, 2018

Total new and relapse	227 999
- % tested with rapid diagnostics at time of diagnosis	71%
- % with known HIV status	90%
- % pulmonary	89%
- % bacteriologically confirmed ^{ooo}	70%
- % children aged 0-14 years	7%
- % women	37%
- % men	56%
Total cases notified	235 652

Universal health coverage and social protection

TB treatment coverage (notified/estimated incidence), 2018	76% (57–110)
TB patients facing catastrophic total costs	
TB case fatality ratio (estimated mortality/estimated incidence), 2018	22% (14–30)

TB/HIV care in new and relapse TB patients, 2018

	Number	(%)
Patients with known HIV status who are HIV-positive	120 862	59%
- on antiretroviral therapy	104 625	87%

Drug-resistant TB care, 2018

% of bacteriologically confirmed TB cases tested for rifampicin resistance ^{ooo}	
- New cases	92%
- Previously treated cases	94%
Laboratory-confirmed cases*	MDR/RR-TB: 13 199, XDR-TB: 553
Patients started on treatment**	MDR/RR-TB: 9 558, XDR-TB: 539
MDR/RR-TB cases tested for resistance to second-line drugs	7 469

Treatment success rate and cohort size

	Success	Cohort
New and relapse cases registered in 2017	77%	240 332
Previously treated cases, excluding relapse, registered in 2017	59%	6 508
HIV-positive TB cases registered in 2017	75%	134 672
MDR/RR-TB cases started on second-line treatment in 2016	54%	11 159
XDR-TB cases started on second-line treatment in 2016	58%	601

TB preventive treatment, 2018

% of HIV-positive people (newly enrolled in care) on preventive treatment	65%
% of children (aged < 5) household contacts of bacteriologically-confirmed TB cases on preventive treatment	59% (54–65)

TB financing, 2019

National TB budget (US\$ millions)	240
Funding source: 87% domestic, 13% international, 0% unfunded	

^o Ranges represent uncertainty intervals

^{oo} MDR is TB resistant to rifampicin and isoniazid; RR is TB resistant to rifampicin

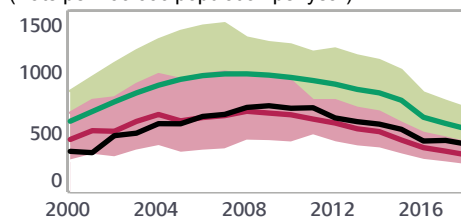
^{ooo} Calculated for pulmonary cases only

* Includes cases with unknown previous TB treatment history

** Includes patients diagnosed before 2018 and patients who were not laboratory-confirmed

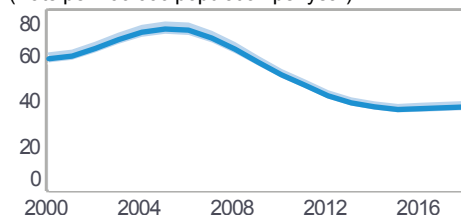
Tuberculosis profile

(Rate per 100 000 population per year)



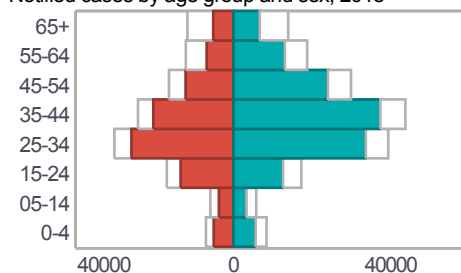
Legend:
■ Total TB incidence
■ New and relapse TB cases notified
■ HIV-positive TB incidence

(Rate per 100 000 population per year)



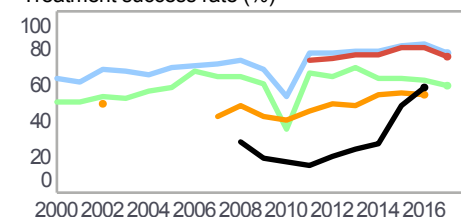
Legend:
■ HIV-negative TB mortality

Notified cases by age group and sex, 2018



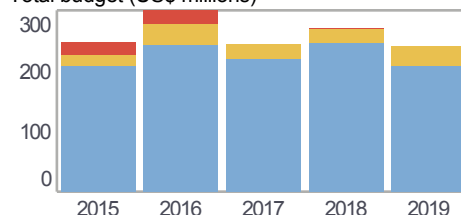
Legend:
■ Females ■ Males Incidence

Treatment success rate (%)



Legend:
■ New and relapse
■ Retreatment, excluding relapse
■ HIV-positive ■ MDR/RR-TB ■ XDR-TB

Total budget (US\$ millions)



Legend:
■ Unfunded
■ Funded internationally
■ Funded domestically